

# Dongmei Casting

Expert in Designing and Manufacturing of Heat Resistant Products



# Dongmei's Customers

## ■ Passenger car



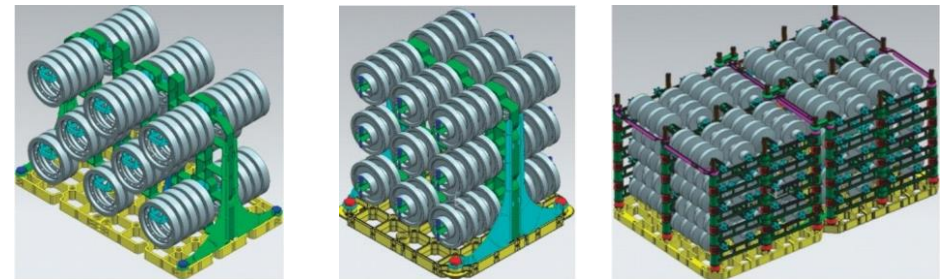
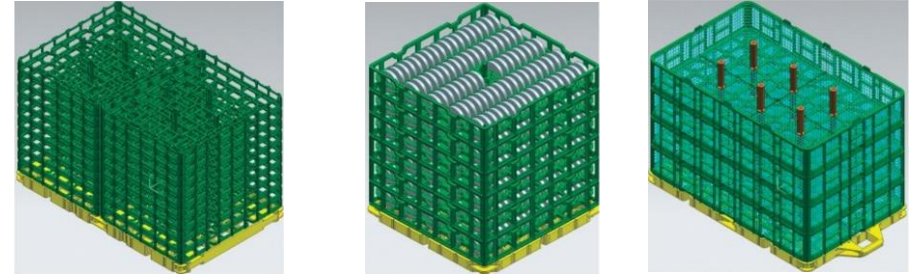
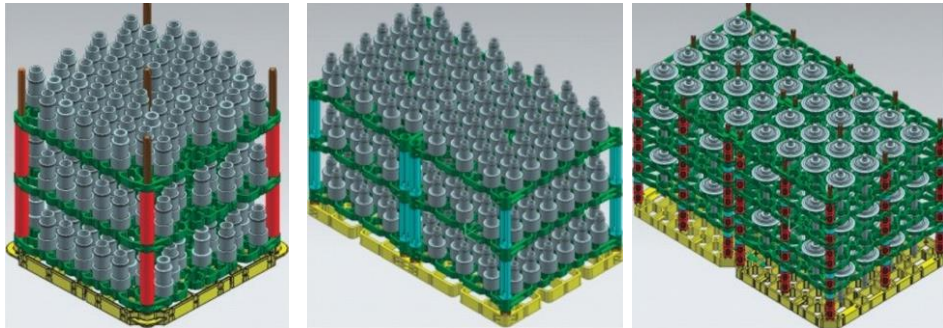
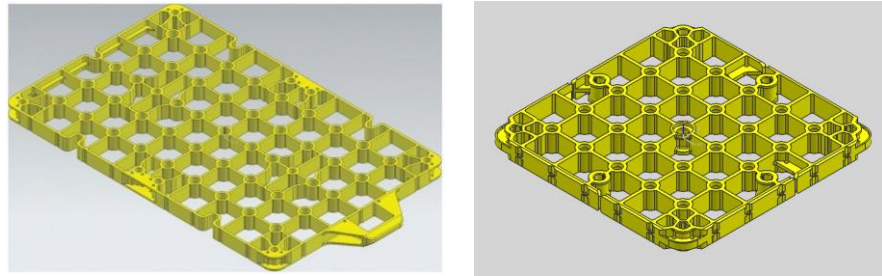
## ■ Commercial vehicle



## ■ Overseas market



# Dongmei's Product





# Dongmei's Advantage

- Independent design and R & D capability: We are one of the few domestic heat-resistant steel companies in China with independent design & R & D capabilities, not only according to customer needs tailored to the corresponding product retesting

By UG, PRO/E and other 3D software for product structure design

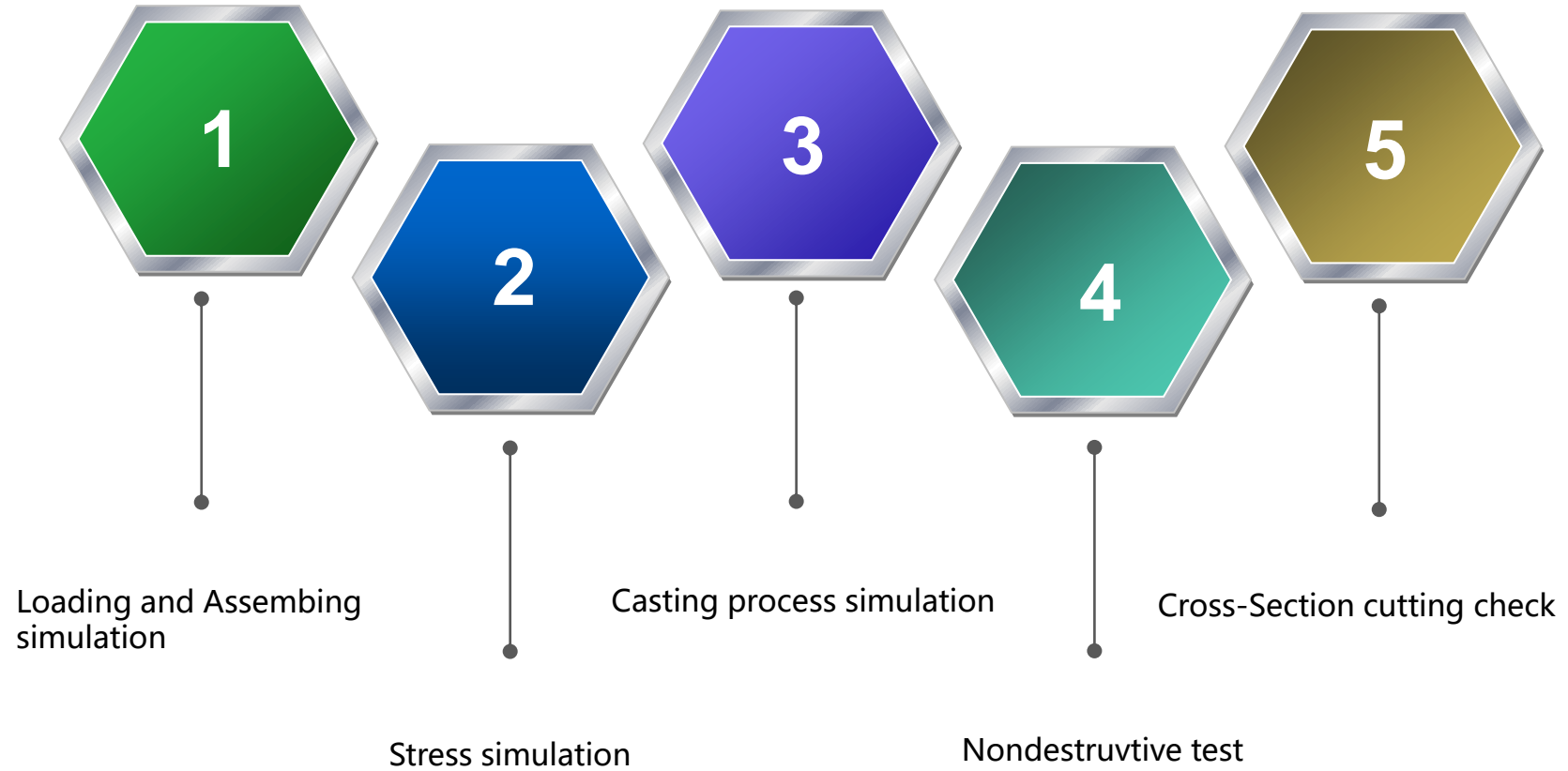
Stress analysis on high temperature conditions through Ansys finite element analysis software Simulation and analysis of casting system by procast CAE

Unique material composition design

- Continuously provide customers with 'two drops and two rises' value-added services: our aim is to create higher value for customers with high-quality products and services through the optimisation of materials and structures, so as to achieve strategic cooperation and mutual benefit and win-win situation.

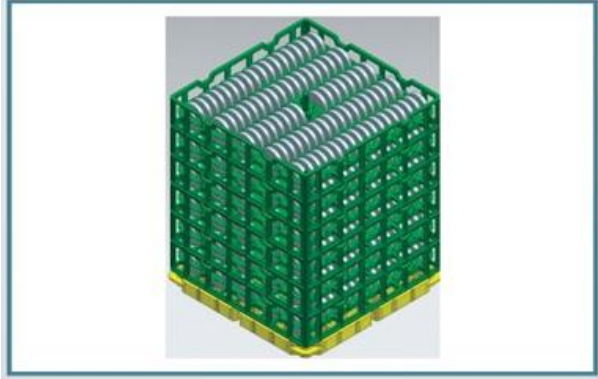
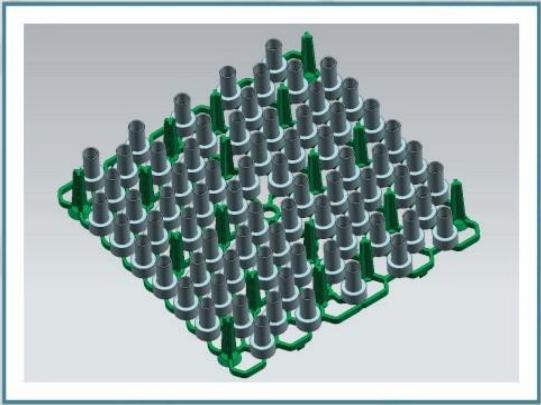
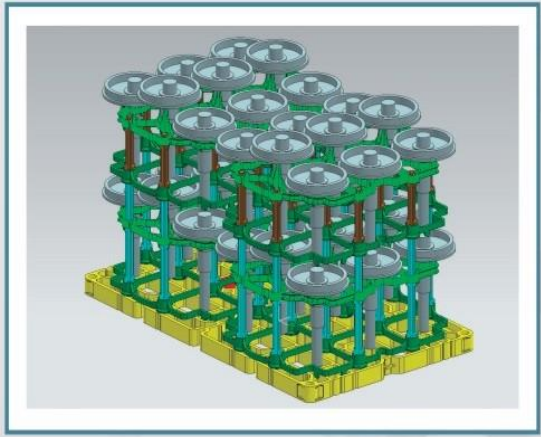
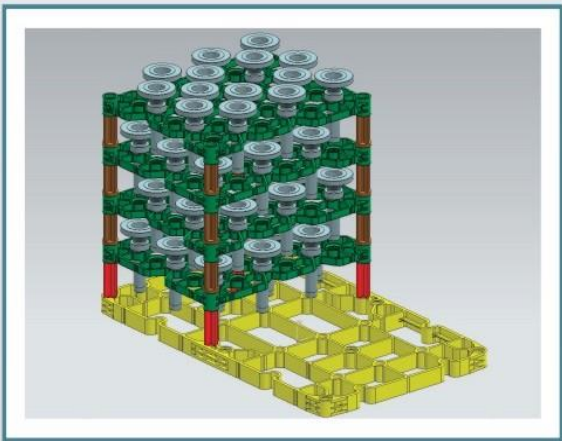


# Dongmei's R&D



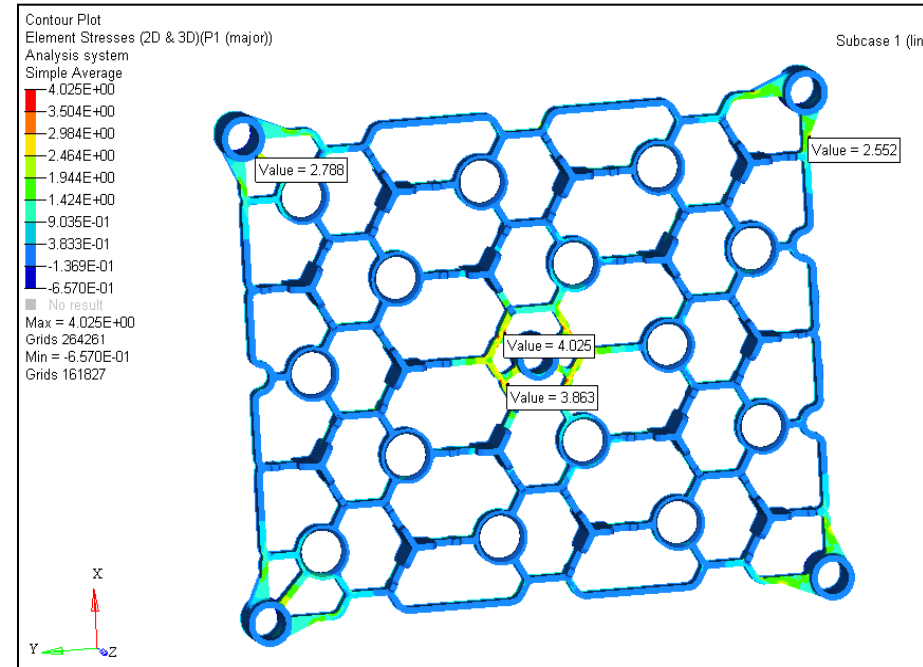
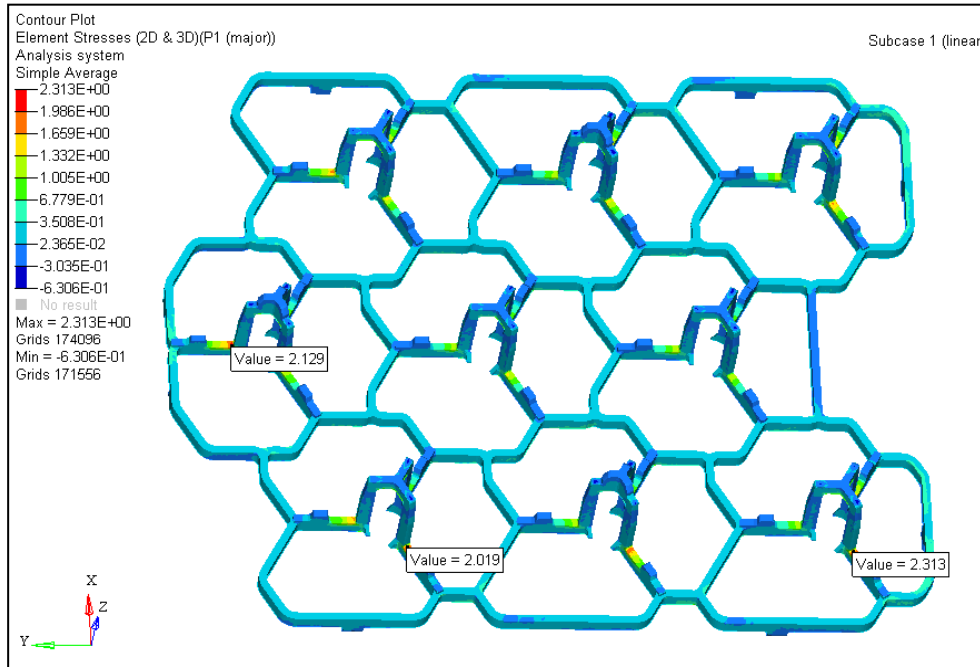
# Dongmei's R&D

➤ Load and Assembly Simulation



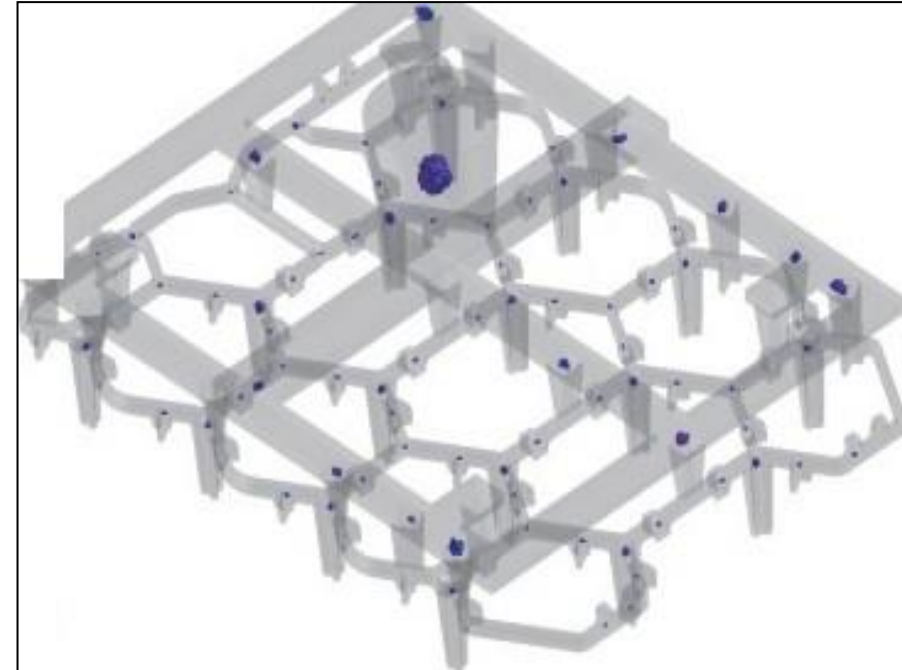
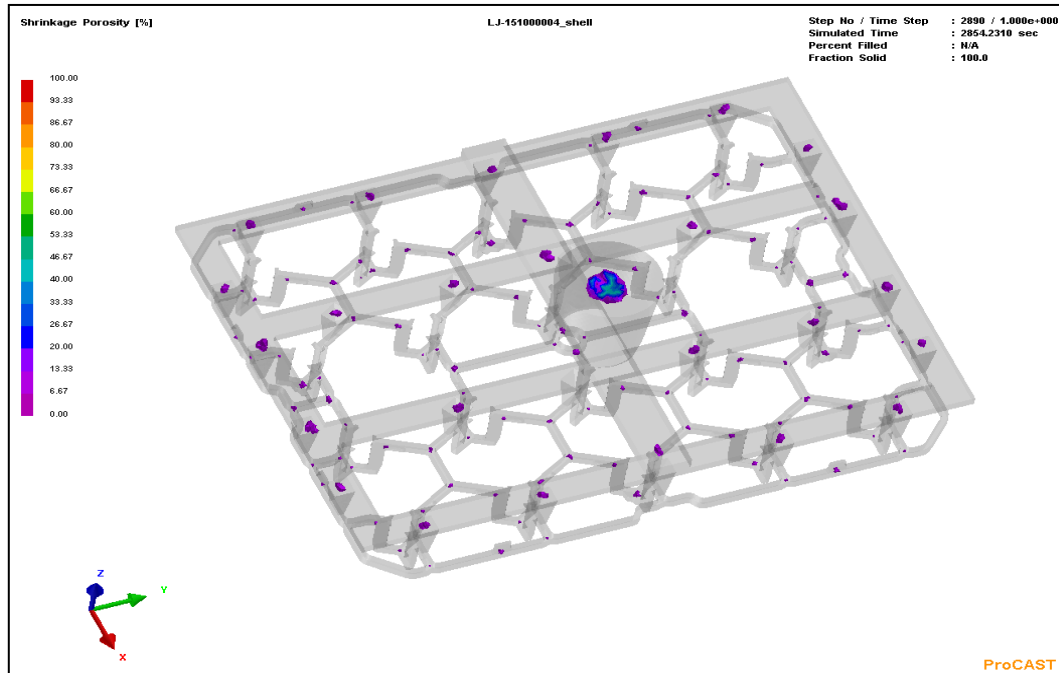
# Dongmei's R&D

## ➤ High temperature stress simulation



# Dongmei's R&D

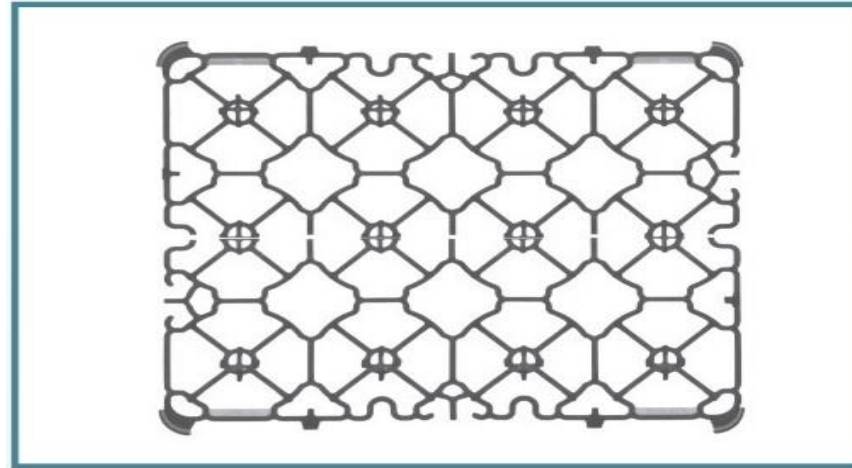
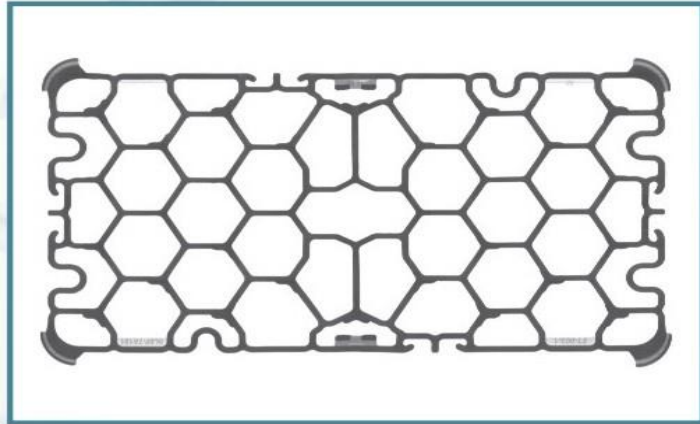
## ➤ Casting process simulation





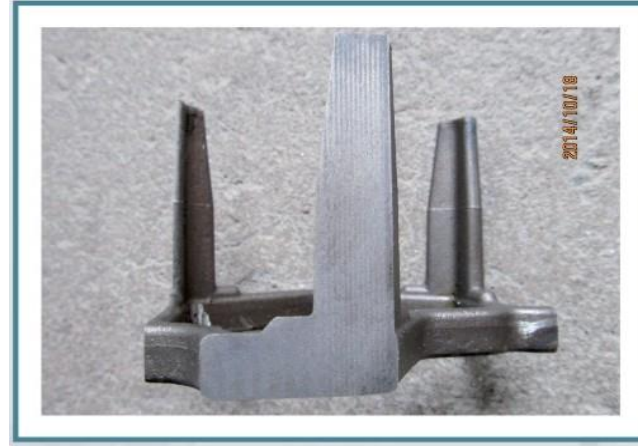
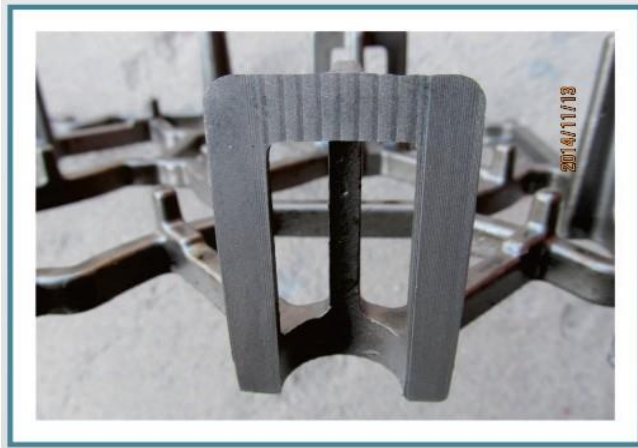
# Dongmei's R&D

Physical non-destructive testing



# Dongmei's R&D

## ➤ Physical cutting inspection



# Dongmei's R&D

## ➤ Materials

Carburization in protection gas

- SCH13、SCH21、SCH20XNb
- SCH16, SCH24Nb等

Low pressure carburization in vacuum

- SCH42
- SCH44

Temper and Normalization

- SCH33
- SCH24Nb

国际标准 ISO	美国 ASTM	日本 JIS	德国 DIN	c	Si	Mn	p≤	S≤	Cr	Ni	Mo	其他
G X25CrN iSi18-9	HF	SCH 12		0.20-0.40	<2.00	<2.00	0.040	0.040	18.00-23.00	8.0 -12.00	(≤0.50)	—
		SCH 13		0.20-0.50	≤2.00	≤2.00	0.040	0.040	24.0 -28.00	11.00-14.00	(≤0.50)	( N ≤0.20 )
		SCH 13A	1.4837	0.25-0.50	≤2.50	≤2.50	0.040	0.040	23.00-26.00	12.00-14.00	(≤0.50)	( N ≤0.20 )
GX40CrN iSi25-12	HH	SCH13X		0.30-0.50	1.0 -2.50	≤2.00	0.040	0.030	24.00-27.00	11.00-14.00	(≤0.50)	—
		SCH 15		0.35-0.70	≤2.50	≤2.00	0.040	0.040	15.00-19.00	33.00-37.00	(≤0.50)	—
GX40NiCrSi35-17	HT	SCH ISX	1.4806	0.30-0.50	1.00-2.50	≤2.00	0.040	0.030	16.00-18.00	34.0 -36.00	(≤0.50)	—
		SCH16		0.20-0.35	≤2.50	≤2.00	0.040	0.040	13.00-17.00	33.00-37.00	(≤0.50)	—
		SCH 17		0.20-0.50	≤2.00	≤2.00	0.040	0.040	26.0 -30.00	8.00 -11.00	(≤0.50)	—
		SCH 18		0.20-0.50	≤2.00	≤2.00	0.040	0.040	26.00-30.00	14.00-18.00	(≤0.50)	—
		SCH 19		0.20-0.50	≤2.00	≤2.00	0.040	0.040	19.00-23.00	23.00-27.00	(≤0.50)	—
		SCH20		0.35-0.75	≤2.50	≤2.00	0.040	0.040	17.00-21.00	37.0 -41.00	(≤0.50)	—
GX40NiCrSi38-19	H U	SCH20X		0.30-0.50	1.00-2.50	≤2.00	0.040	0.030	18.00-21.00	36.00-39.00	(≤0.50)	—
		SCH20X b	1.4849	0.30-0.50	1.00-2.50	≤2.00	0.040	0.030	18.0 -21.00	36.00-39.00	(≤0.50)	N b 1.20-1.80
GX40NiCrSi25-20	H K -30	SCH21	1.4848	0.25-0.35	≤1.75	≤1.50	0.040	0.040	23.00-27.00	19.0 -22.00	(≤0.50)	( N ≤0.20 )
		SCH22		0.35-0.45	≤1.75	≤1.50	0.040	0.040	23.0 -27.00	19.00-22.00	(≤0.50)	( N ≤0.20 )
		SCH22X		0.30-0.50	1.00-2.50	≤2.00	0.040	0.030	24.0 -27.00	19.00-22.00	(≤0.50)	—
		SCH23		0.20-0.60	≤2.00	≤2.00	0.040	0.040	28.00-32.00	18.00-22.00	(≤0.50)	—
		SCH24	1.4857	0.35-0.55	≤2.00	≤2.00	0.040	0.040	24.0 -28.00	33.00-37.00	(≤0.50)	—
GX40NiCrSi35-26	HP	SCH24X		0.30-0.50	1.00-2.50	≤2.00	0.040	0.030	24.00 -27.00	33.0 -36.00	(≤0.50)	—
GX40NiCrSiN b35-26	≈HP	SCH24XN b	1.4852	0.30-0.50	1.0 -2.50	≤2.00	0.040	0.030	24.00-27.00	33.00-36.00	(≤0.50)	Nb0.80-1.80
GX25CrN iSi18-9	HF	SCH31		0.15 ” 0.35	1.00-2.50	≤2.00	0.040	0.030	17.00-19.00	8.00-10.00	(≤0.50)	—
GX25CrN iSi20-14		SCH 32		0.15-0.35	1.00-2.50	≤2.00	0.040	0.030	19.00-21.00	13.00-15.00	(≤0.50)	—
		SCH33	1.4855	0.25-0.50	1.00-2.50	≤2.00	0.040	0.030	23.00-25.00	23.00-25.00	(≤0.50)	Nb 1.20-1.80
		SCH42	2.4879	0.35-0.55	1.00-2.50	≤1.50	0.040	0.030	27.00 30.00	47.0 ” 50.00	(≤0.50)	W4.00-6.00
		SCH44		0.40 0.60	0.50 2.00	≤1.50	0.040	0.030	16.00-21.00	50.0 ” 55.00	(≤0.50)	—



# Cases





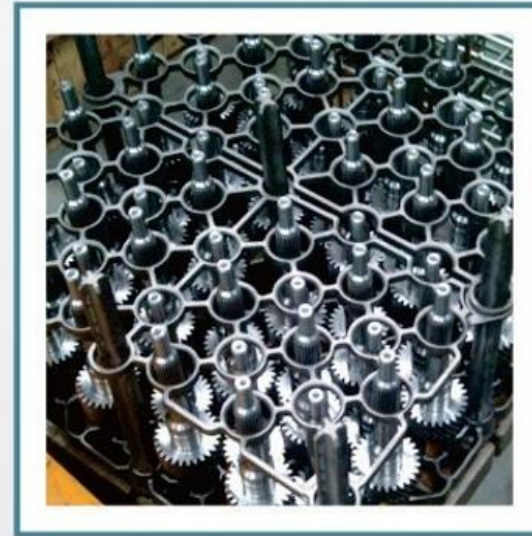
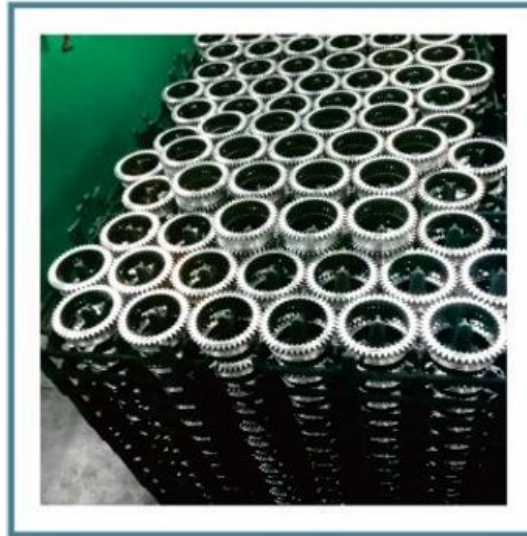
# Cases

## ➤ Vacuum Furnace Tooling





# Cases



# Cases



# Thank you

**SHIYAN DONGMEI INVESTMENT CASTING CO.,LTD.**

3602 Industrial Park, Nanhe Town, Danjiangkou, Shiyan City, Hubei  
China

Tel: +86719-5616186

Fax: +86719-5616189

Email: [sales@dmjz.cn](mailto:sales@dmjz.cn)

Europe partner :

**Dongjun Europe GmbH**

Moehlenhoff 2b ,

D-21109 Hamburg , Germany

Tel: +49 40-31792985

E-mail: [info@dongjun.de](mailto:info@dongjun.de)

[www.dongjun.de](http://www.dongjun.de)